

INSTALLATION

1



DJI Mavic 2 Pro | Stickers

Mount the green tracking mark sticker aligned to the circle on the aircraft's camera. Mount the red tracking sticker on the aircraft's camera (see illustration).

2



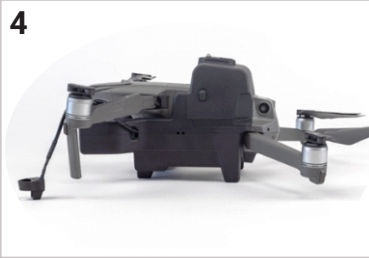
Slide the Automoving light unit above the belly of the aircraft above the rear aircraft arm while maintaining a 45° angle. As you do this, begin to adjust the Automoving light unit's angle so that, after the end of the sliding motion, it is parallel to the aircraft's body.

3



Insert the Automoving light Battery into the Automoving light's battery slots. Slide the battery forwards to the Automoving light's battery compartment.

4



Make sure the battery is mounted securely and that the battery latches have clicked into place. The image illustrates a correctly mounted battery. There should be no «GAP» between the battery and the battery connector on the Automoving light unit.

5



Slide the cable plug upwards until it reaches the front LED. Slide it upwards until it fully covers the aircraft's front LED. Fasten the cable below the drone's arm with the Velcro. Connect the USB C connector to the USB C port on the Automoving Light.

6



Hold the power button on the battery down for around 3 seconds to turn on the Automoving light. On startup the floodlight LED will blink once, when the boot sequence is ready the lamp will blink one more time.

QUICK START GUIDE

AUTOMOVING LIGHT FOR DJI MAVIC 2

TUNDRA
DRONE



Find the detailed User Manual:
<https://tundradrone.com/support>

Manufactured by Tundra Drone AS
Address: Suomaluvodda 44,
9520 Kautokeino, Norway

Designed in Norway



Scan me for User Manual